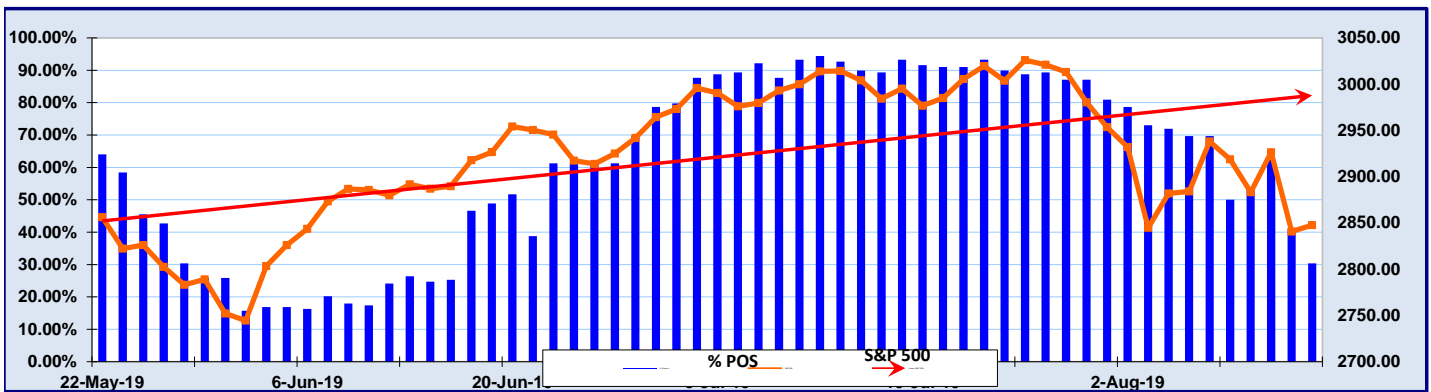


The Quacera ETF Trend Report

August 15, 2019

% Positive Momentum 30.34%



Quacera Positive Momentum Box Scores

U.S. Sectors and Industries

Basic Materials , Industrial, and Transport	42.86%
Consumer Related	50.00%
Energy	12.50%
Finance	50.00%
Healthcare	0.00%
Technology	63.64%
Telecommunication	25.00%
Utilities	100.00%
SPDR Sectors	44.44%

Investment Styles

Small - Cap	16.67%
Mid - Cap	10.00%
Large - Cap	36.36%
Growth	72.73%
Value	8.33%
Income	75.00%

International

Americas	25.00%
Asia	0.00%
Europe	11.76%
Global Composites	0.00%

QPM Score Explanation

Q - Refers to the Quadrant:

- A - Positive Momentum & Outperforming
- B - Positive Momentum & Underperforming
- C - Negative Momentum & Outperforming
- D - Negative Momentum & Underperforming

QP The first number relates to performance within the quadrant. "1" is the best performance in the quadrant, so it is always at the top of the quadrant. In "A" the "1" is the best performance. In "B" the "1" is the least negative performance.

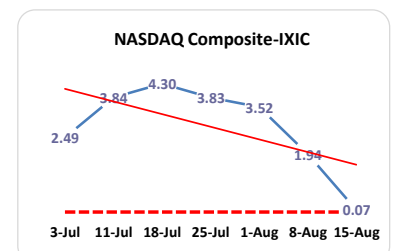
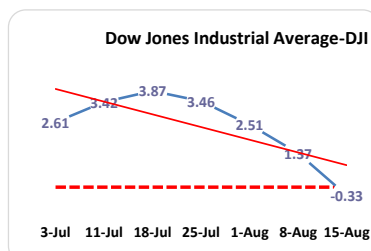
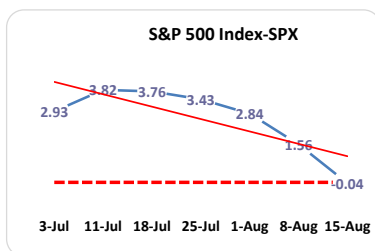
QPM The second number refers to momentum within the quadrant. "1" is the best momentum in the quadrant, so it is always on the right side of the quadrant. In "A" the "1" is the best positive momentum. In "C" the "1" is the least negative momentum for the quadrant.

QPM Score " A3-1 " This reflects the position in Quadrant "A" In that quadrant the ETF is in the region of least positive performance "3" and the best positive momentum "1".

In this presentation the Standard and Poor's 500 Composite is the benchmark for performance comparisons.

Momentum is based on prices from the previous thirty weeks. The data is weighted to give more recent prices emphasis.

Early Warning Momentum Tracking : The Averages



August 15, 2019

	Symbol	Today's Price	QPM Score	Trend	Trend Started	Starting Price	% Change Since Start
Market Capitalization							
MICRO CAP							
iShare Russell Micro Cap	IWC	84.93	D1-1	Negative	2-Aug-19	89.72	-5.34%
First Trust DJ Micro Cap	FDM	42.92	D1-1	Negative	14-Aug-19	43.22	-0.70%
PowerShares Micro Cap	PZI	18.44	B1-3	Positive	1-Feb-19	17.72	4.04%
SMALL CAP							
iShr Russell 2000 Index	IWM	145.49	D1-1	Negative	7-Aug-19	149.42	-2.63%
iShare S & P Small Cap 600 Index	IJR	73.99	D1-1	Negative	14-Aug-19	74.27	-0.38%
Morningstar Small Core	JKJ	165.12	D1-1	Negative	14-Aug-19	165.62	-0.30%
Vanguard Small Cap	VB	148.51	D1-1	Negative	14-Aug-19	148.62	-0.07%
MID -CAP							
iShare S & P Mid Cap 400	IJH	183.46	D1-1	Negative	14-Aug-19	183.78	-0.17%
SPDR Mid Cap S & P 400	MDY	334.51	D1-1	Negative	14-Aug-19	335.00	-0.15%
iShare Russell Mid Cap	IWR	53.66	D1-1	Negative	15-Aug-19	53.66	0.00%
Morningstar Mid Core	JKG	187.89	D1-1	Negative	15-Aug-19	187.89	0.00%
Vanguard Mid Cap	VO	160.71	D1-1	Negative	15-Aug-19	160.71	0.00%
LARGE CAP							
Dow Industrial Diamonds	DIA	256.36	D1-1	Negative	14-Aug-19	255.08	0.50%
iShare Russell 1000 Index	IWB	158.10	D1-1	Negative	15-Aug-19	158.10	0.00%
iShare S & P 100	OEF	125.98	D1-1	Negative	15-Aug-19	125.98	0.00%
iShare S & P 500	IVV	286.34	D1-1	Negative	15-Aug-19	286.34	0.00%
NASDAQ 100	QQQ	182.55	B1-3	Positive	24-Jun-19	188.16	-2.98%
Morningstar Large Core	JKD	160.33	D1-1	Negative	14-Aug-19	160.21	0.08%
NASDAQ Composite	ONEQ	305.88	B1-3	Positive	24-Jun-19	314.77	-2.82%
SPDR S & P 500	SPY	284.65	D1-1	Negative	15-Aug-19	284.65	0.00%
PowerShares Dynamic Mkt	PWC	92.06	D1-1	Negative	9-Aug-19	94.82	-2.92%
Rydex S&P Equal Weight	RSP	102.43	D1-1	Negative	14-Aug-19	102.40	0.03%
Russell Top Mega Cap	XLG	204.52	D1-1	Negative	15-Aug-19	204.52	0.00%
Vanguard Large Cap	VV	130.76	D1-1	Negative	15-Aug-19	130.76	0.00%
BROAD MARKET							
iShare Dow Jones Total Market	IYY	141.65	D1-1	Negative	15-Aug-19	141.65	0.00%
iShare Russell 3000 Index	IWV	166.95	D1-1	Negative	15-Aug-19	166.95	0.00%
Vanguard Extended Mkt	VXF	112.86	D1-1	Negative	14-Aug-19	113.01	1.56%
Vanguard Total Market	VTI	145.14	D1-1	Negative	15-Aug-19	145.14	0.00%

August 15, 2019

	Symbol	Today's Price	QPM Score	Trend	Trend Started	Starting Price	% Change Since Start
Value							
SMALL CAP							
Russell 2000 Value	IWN	111.31	D1-1	Negative	2-Aug-19	117.31	-5.11%
iShare S & P Small Cap 600 Barra Value	IJS	139.04	D1-1	Negative	7-Aug-19	143.26	-2.95%
Morningstar Small Cap Value	JKL	124.51	D2-1	Negative	1-Aug-19	133.85	-6.98%
Vanguard Small Cap	VBR	121.21	D1-1	Negative	5-Aug-19	123.95	-2.21%
MID -CAP							
iShare S & P Mid Cap 400 Barra Value	IJJ	148.54	D1-1	Negative	9-Aug-19	154.75	-4.01%
iShare Russell Mid Cap Value	IWS	84.50	D1-1	Negative	14-Aug-19	84.39	0.13%
Morningstar Mid Cap Value	JKI	149.47	D1-1	Negative	14-Aug-19	149.67	-0.13%
LARGE CAP							
iShare Russell 1000 Value	IWD	121.51	D1-1	Negative	14-Aug-19	121.28	0.19%
iShr S & P 500 Value	IVE	112.09	D1-1	Negative	15-Aug-19	112.09	0.00%
Morningstar Large Cap Value	JKF	103.54	D1-1	Negative	14-Aug-19	103.74	-0.19%
PwrShrs Large Cap	PWV	35.77	A3-3	Positive	18-Jun-19	36.66	-2.43%
Vanguard Value	VTV	106.03	D1-1	Negative	14-Aug-19	105.95	0.08%
BROAD MARKET							
iShare U.S.Core Value	IUSV	54.37	D1-1	Negative	14-Aug-19	54.32	0.09%

	Symbol	Today's Price	QPM Score	Trend	Trend Started	Starting Price	% Change Since Start
Growth							
SMALL CAP							
iShr Russell 2000 Growth	IWO	190.86	D1-1	Negative	14-Aug-19	191.76	-0.47%
iShare S & P 600 Barra Growth	IJT	174.22	D1-1	Negative	14-Aug-19	174.50	-0.16%
Morningstar Small Cap Growth	JKK	197.12	B1-3	Positive	28-Jun-19	203.62	-3.19%
Vanguard Small Cap Growth	VBK	180.39	B1-3	Positive	24-Jun-19	183.73	-1.82%
MID -CAP							
iShare S & P Mid Cap 400 Barra Growth	IJK	216.98	D1-1	Negative	15-Aug-19	216.98	0.00%
Russell Mid Cap Growth	IWP	139.50	B1-3	Positive	12-Jun-19	140.50	-0.71%
LARGE CAP							
iShare Russell 1000 Growth	IWF	155.59	B1-3	Positive	18-Jun-19	157.24	-1.05%
iShr S&P 500 Growth	IVW	175.41	B1-3	Positive	12-Jun-19	176.87	-0.83%
Morningstar Large Cap Growth	JKE	188.66	A3-3	Positive	12-Jun-19	187.28	0.74%
Powershare Large Cap Growth	PWB	47.72	A3-3	Positive	18-Jun-19	48.36	-1.31%
Vanguard Growth	VUG	161.27	A3-3	Positive	18-Jun-19	163.15	-1.15%
BROAD MARKET							
iShare U.S. Core Growth	IUSG	61.33	B1-3	Positive	12-Jun-19	61.83	-0.81%

August 15, 2019

	Symbol	Today's Price	QPM Score	Trend	Trend Started	Starting Price	% Change Since Start
Sector / Industry							
BASIC MATERIALS							
iShare Dow Jones U.S. Basic Materials	IYM	87.52	D1-1	Negative	14-Aug-19	87.73	-0.24%
SPDR Basic Industry	XLB	55.64	B1-3	Positive	13-Jun-19	58.12	-4.27%
iShare Goldman Sachs Natural Resources	IGE	27.60	D2-1	Negative	1-Aug-19	29.48	-6.38%
Comex Gold Trust	IAU	14.58	A2-2	Positive	31-May-19	12.51	16.55%
iShare Silver Trust	SLV	16.13	A2-2	Positive	24-Jun-19	14.46	11.55%
streetTracks Gold	GLD	143.70	A2-2	Positive	31-May-19	123.33	16.52%
Vanguard Materials	VAW	120.16	D1-1	Negative	14-Aug-19	120.22	-0.05%
CONSUMER CYCLICAL							
iShare Dow Jones U.S. Consumer Cyclical	IYC	210.21	D1-1	Negative	15-Aug-19	210.21	0.00%
SPDR Consumer Discretionary	XLY	114.59	D1-1	Negative	15-Aug-19	114.59	0.00%
Retail Mkt Vectors	RTH	106.04	D1-1	Negative	15-Aug-19	106.04	0.00%
PowerShares Consumer Retail	PMR	35.65	D1-1	Negative	14-Aug-19	35.61	0.12%
PowerShares Leisure & Entertainment	PEJ	42.57	B1-3	Positive	3-Jul-19	44.08	-3.44%
Vanguard Consumer Discretionary	VCR	171.45	D1-1	Negative	14-Aug-19	171.98	-0.31%
CONSUMER NON-CYCLICAL							
iShare Dow Jones U.S. Consumer Non Cyclical	IYK	120.77	B1-3	Positive	12-Jun-19	121.86	-0.89%
SPDR Consumer Staples	XLP	59.53	A3-3	Positive	12-Feb-19	54.35	9.53%
PS Dynamic Food & Bev	PBJ	34.58	B1-3	Positive	5-Feb-19	31.72	9.03%
Vanguard Consumer Staples	VDC	151.89	B1-3	Positive	8-Feb-19	139.28	9.05%
ENERGY							
iShare Dow Jones U.S. Energy	IYE	30.08	D2-2	Negative	26-Jul-19	33.52	-10.26%
Oil ServiceMkt Vector	OIH	10.89	D3-3	Negative	7-May-19	15.90	-31.51%
SPDR Energy	XLE	56.28	D2-2	Negative	1-Aug-19	61.28	-8.16%
iShare Global Energy Sector	IXC	28.49	D2-2	Negative	13-May-19	32.33	-11.88%
PowerShares Energy Exploration	PXE	13.86	D3-3	Negative	13-May-19	18.27	-24.14%
PowerShares Oil & Gas Services	PXJ	4.47	D3-3	Negative	7-May-19	6.65	-32.78%
PowerShares WilderHill Clean Energy	PBW	28.69	B1-3	Positive	13-Jun-19	28.86	-0.59%
Vanguard Energy	VDE	73.92	D2-2	Negative	23-Jul-19	83.93	-11.93%
FINANCIAL							
iShare Dow Jones U.S. Financial Sector	IYF	122.18	B1-3	Positive	30-Jan-19	116.08	5.25%
iShare Dow Jones U.S. Financial Services	IYG	127.88	B1-3	Positive	24-Jun-19	131.58	-2.81%
iShare Dow Jones U.S. Real Estate	IYR	90.71	B1-3	Positive	29-Jan-19	82.02	10.59%
iShare Cohen & Steers Realty Majors	ICF	116.81	B1-3	Positive	30-Jan-19	104.85	11.41%
DJ Wilshire REIT	RWR	100.94	B1-3	Positive	29-Jul-19	100.56	0.38%
SPDR Financial	XLF	26.11	D1-1	Negative	14-Aug-19	25.98	0.50%
iShare Global Financial	IXG	59.16	D1-1	Negative	5-Aug-19	60.69	-2.52%
KBW Insurance	KIE	33.38	B1-3	Positive	4-Apr-19	31.42	6.24%
KBW Capital Market	KCE	51.67	D1-1	Negative	8-Aug-19	54.31	-4.86%
KBW Banks	KBE	39.72	D1-1	Negative	9-Aug-19	41.82	-5.02%
Vanguard Financial	VFH	65.35	D1-1	Negative	14-Aug-19	65.26	0.14%
Vanguard REIT	VNQ	90.25	B1-3	Positive	30-Jan-19	82.58	9.29%
HEALTHCARE							
iShare Dow Jones U.S. Healthcare	IYH	188.65	D1-1	Negative	14-Aug-19	188.09	0.30%
NASDAQ Biotech	IBB	102.68	D1-1	Negative	2-Aug-19	105.07	-2.27%
BiotechMkt Vector	BBH	123.30	D1-1	Negative	14-Aug-19	123.22	0.06%
Pharmaceutical Mkt Vector	PPH	55.25	D1-1	Negative	25-Jul-19	56.93	-2.95%
iShare Global Healthcare	IXJ	60.09	D1-1	Negative	14-Aug-19	59.92	0.28%
SPDR Healthcare	XLV	89.45	D1-1	Negative	9-Aug-19	91.40	-2.13%
PowerShares Pharmaceutical	PJP	55.49	D2-1	Negative	25-Mar-19	64.02	-13.32%
PowerShares Biotech & Genome	PBE	50.08	D1-1	Negative	14-Aug-19	50.43	-0.70%
Vanguard Health Care	VHT	167.69	D1-1	Negative	14-Aug-19	167.31	0.23%
INDUSTRIAL							
iShr U.S. Industrials	IYJ	150.71	D1-1	Negative	14-Aug-19	150.35	0.24%
SPDR Industrial	XLI	72.89	D1-1	Negative	14-Aug-19	72.97	-0.11%
PowerShares Building & Construction	PKB	30.33	B1-3	Positive	31-Jan-19	26.19	15.82%
SPDR Homebuilders	XHB	40.05	D1-1	Negative	15-Aug-19	40.05	0.00%
Vanguard Industrials	VIS	137.32	D1-1	Negative	14-Aug-19	16-May-00	-0.06%

August 15, 2019

	Symbol	Today's Price	QPM Score	Trend	Trend Started	Starting Price	% Change Since Start
Sector / Industry							
TRANSPORTATION							
iShare Dow Jones Transportation	IYT	175.74	D1-1	Negative	14-Aug-19	177.14	-0.79%
PowerShares Aerospace & Defense	PPA	65.08	A3-3	Positive	31-Jan-19	55.50	17.26%
TECHNOLOGY							
iShare Dow Jones U.S. Technology	IYW	194.89	B1-3	Positive	24-Jun-19	199.03	-2.08%
iShare Goldman Sach Technology	IGM	211.05	B1-3	Positive	24-Jun-19	216.72	-2.62%
iShrs Networking	IGN	50.06	D2-1	Negative	9-Aug-19	52.73	-5.06%
Market Vectors Semiconductor	SMH	109.55	A3-3	Positive	1-Jul-19	113.33	-3.34%
iShr Exponential Tech	XT	36.92	D1-1	Negative	14-Aug-19	36.95	-0.08%
iShare Goldman Sachs Software	IGV	209.77	D1-1	Negative	15-Aug-19	209.77	0.00%
PowerShares Software	PSJ	95.62	B1-3	Positive	24-Jan-19	80.44	18.87%
SPDR Technology	XLK	76.82	B1-3	Positive	18-Jun-19	77.54	-0.93%
iShare Global Technology Sector	IXN	174.63	B1-3	Positive	24-Jun-19	179.43	-2.68%
PowerShares Networking	PXQ	54.67	D1-1	Negative	9-Aug-19	56.96	-4.01%
Vanguard Info Tech	VGT	206.81	B1-3	Positive	18-Jun-19	209.25	-1.17%
TELECOMMUNICATIONS							
iShr DJ U.S. Telecom	IYZ	27.65	D1-1	Negative	8-Aug-19	29.08	-4.92%
iShare Global Telecom Sector	IXP	55.96	D1-1	Negative	14-Aug-19	55.73	0.41%
PowerShares Media & Entertainment	PBS	31.43	D1-1	Negative	9-Aug-19	32.82	-4.24%
Vanguard Telecom	VOX	85.06	B1-3	Positive	1-Jul-19	87.29	-2.55%
UTILITIES							
iShare Dow Jones U.S. Utility	IDU	153.68	B1-3	Positive	6-Feb-19	138.63	10.86%
PowerShares Utilities	PUI	33.42	B1-3	Positive	31-Jan-19	30.60	9.22%
PowerShares Water Resources	PHO	35.32	B1-3	Positive	5-Jun-19	34.57	2.17%
Vanguard Utilities	VPU	135.69	B1-3	Positive	6-Feb-19	121.84	11.37%
Utilities SPDR	XLU	61.07	B1-3	Positive	6-Feb-19	54.72	11.60%

International							
EUROPE							
iShr SP 350 Europe (IEV)	IEV	40.88	D1-1	Negative	30-Jul-19	43.19	-5.35%
Europe 100 ADR	ADRU	19.62	D1-1	Negative	1-Aug-19	20.74	-5.42%
PowerShares Euro Currency Trust	FXE	105.70	D1-1	Negative	25-Jul-19	106.04	-0.32%
DJ Stoxx 50	FEU	31.92	D1-1	Negative	1-Aug-19	33.19	-3.83%
DJ Euro Stock 60	FEZ	35.46	D1-1	Negative	5-Aug-19	35.86	-1.12%
Vanguard European	VGK	50.89	D1-1	Negative	1-Aug-19	53.26	-4.45%
MSCI Austria	EWO	18.48	D2-1	Negative	22-May-19	20.12	-8.17%
MSCI Belgium	EWK	18.01	B1-3	Positive	9-Jul-19	18.36	-1.91%
MSCI EMU Index	EZU	36.53	D1-1	Negative	1-Aug-19	38.38	-4.82%
MSCI France	EWQ	28.44	D1-1	Negative	2-Aug-19	29.18	-2.54%
MSCI Germany	EWG	25.25	D2-1	Negative	30-Jul-19	26.98	-6.41%
MSCI Italy	EWI	25.30	D2-1	Negative	8-Aug-19	26.32	-3.88%
MSCI Netherlands	EWN	29.41	D1-1	Negative	14-Aug-19	29.47	-0.20%
MSCI Spain	EWP	26.19	D2-1	Negative	25-Jul-19	28.61	-8.46%
MSCI Sweden	EWD	27.27	D2-2	Negative	25-Jul-19	30.08	-9.34%
MSCI Switzerland	EWL	36.57	B1-3	Positive	28-Jan-19	33.03	10.72%
MSCI United Kingdom	EWU	29.51	D2-1	Negative	20-May-19	32.53	-9.28%

		August 15, 2019		Symbol	Today's Price	QPM Score	Trend	Trend Started	Starting Price	% Change Since Start
International										
ASIA										
	FTSE/Xinhua China 25	FXI	38.19	D2-2	Negative	1-Aug-19	40.17	-4.93%		
	MSCI Pacific ex-Japan	EPP	43.23	D1-1	Negative	5-Aug-19	43.84	-1.39%		
	MSCI Australia	EWA	21.01	D1-1	Negative	9-Aug-19	21.49	-2.23%		
	MSCI Hong Kong	EWH	22.69	D2-2	Negative	1-Aug-19	24.20	-6.24%		
	MSCI Japan	EWJ	52.86	D1-1	Negative	5-Aug-19	52.72	0.27%		
	MSCI Malaysia	EWM	27.66	D2-1	Negative	31-Jul-19	28.89	-4.26%		
	MSCI Singapore	EWS	22.73	D1-1	Negative	6-Aug-19	23.22	-2.11%		
	MSCI South Korea	EWY	51.46	D2-2	Negative	19-Jul-19	57.72	-10.85%		
	MSCI Taiwan	EWT	33.71	D1-1	Negative	14-Aug-19	33.48	0.69%		
	Asia 50 ADR	ADRA	29.25	D1-1	Negative	6-Aug-19	29.31	-0.20%		
	PowerShares Golden Dragon China	PGJ	34.49	D1-2	Negative	30-Jul-19	36.58	-5.71%		
	Vanguard Pacific	VPL	62.11	D1-1	Negative	5-Aug-19	62.25	-0.22%		
AMERICAS										
	iShare S&P Latin America 40	ILF	30.39	D2-1	Negative	5-Aug-19	30.95	-1.81%		
	MSCI Brazil	EWZ	41.36	B1-3	Positive	12-Jun-19	42.78	-3.32%		
	MSCI Canada	EWC	27.34	D1-1	Negative	9-Aug-19	28.17	-2.95%		
	MSCI Mexico	EWX	38.43	D2-2	Negative	21-May-19	44.58	-13.80%		
AFRICA										
	iShars MSCI South Africa	EZA	46.36	D2-2	Negative	30-Jul-19	53.10	-12.69%		
GLOBAL										
	MSCI EAFE	EFA	61.51	D1-1	Negative	1-Aug-19	64.27	-4.29%		
	MSCI EAFE Growth	EFG	77.11	D1-1	Negative	9-Aug-19	78.81	-2.16%		
	MSCI EAFE Value	EFV	43.98	D2-1	Negative	17-May-19	48.21	-8.77%		
	iShare S & P Global 100	IOO	46.83	D1-1	Negative	9-Aug-19	47.83	-2.09%		
	SPDR Dow Jones Global Titans	DGT	80.10	D1-1	Negative	6-Aug-19	81.68	-1.93%		
	iShr MSCI Emerging Markets	EEM	39.00	D1-1	Negative	1-Aug-19	40.95	-4.76%		
	Emerging Mkt 50	ADRE	37.15	D1-1	Negative	5-Aug-19	36.55	1.64%		
	Developed Market 100 ADR (ADRD)	ADRD	20.10	D1-1	Negative	31-Jul-19	21.21	-5.23%		
	PowerShares Dividend Achiever Int'lID	PID	15.22	D1-1	Negative	26-Jul-19	16.21	-6.11%		
	Vanguard Emerging Markets	VVO	39.22	D1-1	Negative	5-Aug-19	39.18	0.10%		

Income										
TREASURY BONDS										
	iShr 1 -3 Yr Tsy	SHY	85.10	B1-3	Positive	26-Nov-18	83.16	2.33%		
	iShare 7-10 yr Tsy	IEF	113.91	A3-3	Positive	30-Nov-18	101.78	11.92%		
	iShare 20+ yr Tsy	TLT	147.31	A2-2	Positive	10-Dec-18	118.90	23.89%		
	iShare TIPS	TIP	117.56	B1-3	Positive	3-Jan-19	110.32	6.56%		
CORPORATE BONDS										
	iShr iBoxx Invest Grd Corp Bond	LQD	127.62	A3-3	Positive	4-Jan-19	113.16	12.78%		
INVESTMENT GRADE BONDS										
	iShr Core Aggregate	AGG	113.76	B1-3	Positive	11-Dec-18	105.58	7.75%		
Dividend ETF										
	iShare DJ Select Dividend	DVY	95.26	D1-1	Negative	14-Aug-19	95.10	0.17%		
	PowerShares Dividend Achievers High Yield	PEY	17.31	D1-1	Negative	9-Aug-19	17.68	-2.09%		

Averages										
	Dow Jones Average	DJIA	25579.39	D1-1	Negative	14-Aug-19	25479.42	0.39%		
	NASDAQ OTC Composite	NASDAQ	7766.62	B1-3	Positive	24-Jun-19	8005.70	-2.99%		
	Standard & Poor's 500 Composite	SP500	2847.60	C3-1	Negative	15-Aug-19	2847.60	0.00%		