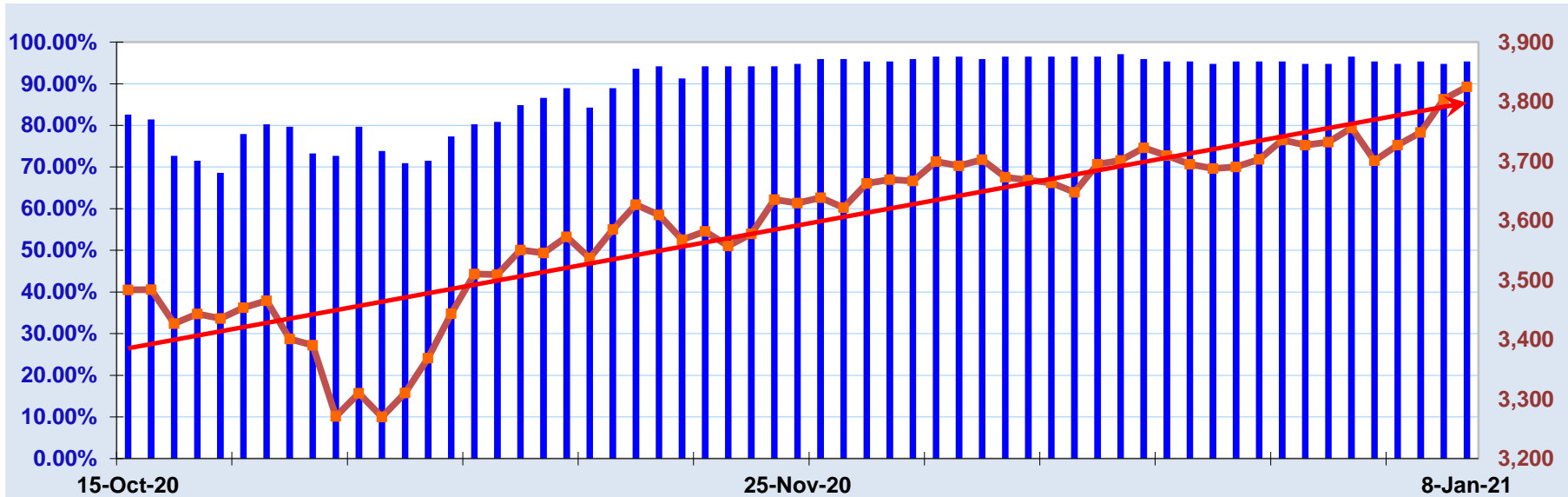


The Quacera ETF Trend Report

January 8, 2021

% Positive Momentum 95.35%

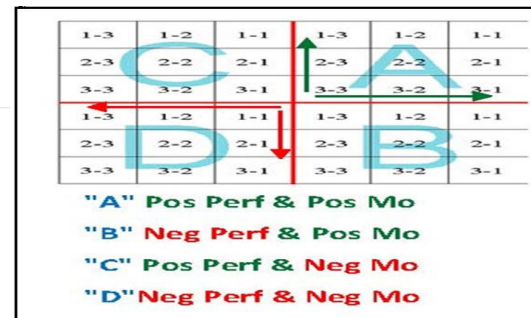
S&P 500 



Quacera Positive Momentum Box Scores

U.S. Sectors and Industries

Basic Materials , Industrial, and Transport	100.00%
Consumer Related	100.00%
Energy	100.00%
Finance	100.00%
Healthcare	100.00%
Technology	100.00%
Telecommunication	100.00%
Utilities	20.00%
SPDR Sectors	88.89%



Quadrants "A" and "D" are destination Quadrants

Quadrants "B" and "C" are Transition Quadrants

Signals are more easily reversed in transition quadrants

Investement Styles

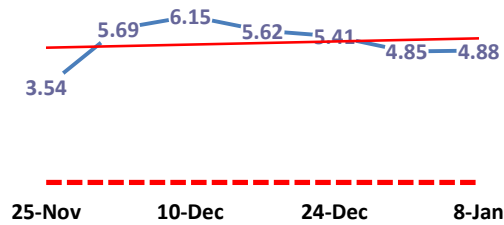
Small - Cap	100.00%
Mid - Cap	100.00%
Large - Cap	100.00%
Growth	100.00%
Value	100.00%
Income	50.00%

International

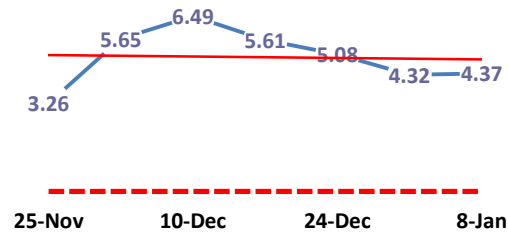
Americas	100.00%
Asia	100.00%
Europe	100.00%
Global Composites	100.00%

Quacera Early Warning Momnmentum Tracking : The Averages

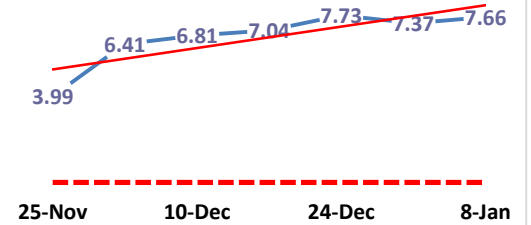
S&P 500 Index-SPX



Dow Jones Industrial Average-DJI



NASDAQ Composite-IXIC



January 8, 2021

Market Capitalization

MICRO CAP

	Symbol	Today's Price	QPM Score	Trend	Trend Started	Starting Price	% Change Since Start	Days Open
iShr Russell Micro Cap	IWC	126.46	A1-1	Positive	2-Oct-20	92.06	37.37%	98
First Trust DJ Micro Cap	FDM	50.34	A2-1	Positive	15-Oct-20	40.48	24.35%	85

SMALL CAP

iShr Russell 2000 Index	IWM	207.72	A1-1	Positive	1-Oct-20	152.14	36.53%	99
iShr S & P Small Cap 600 Index	IJR	97.72	A1-1	Positive	9-Oct-20	76.08	28.44%	91
Morningstar Small Core	JKJ	205.88	A2-1	Positive	7-Oct-20	165.85	24.13%	93
Vanguard Small Cap	VB	203.76	A2-1	Positive	1-Oct-20	156.00	30.62%	99

MID -CAP

iShr S & P Mid Cap 400	IJH	240.93	A2-1	Positive	8-Oct-20	198.42	21.42%	92
SPDR Mid Cap S & P 400	MDY	440.08	A2-1	Positive	8-Oct-20	362.88	21.27%	92
iShr Russell Mid Cap	IWR	70.73	A2-2	Positive	7-May-20	48.93	44.55%	246
Morningstar Mid Core	JKG	241.32	A2-2	Positive	22-May-20	173.57	39.03%	231
Vanguard Mid Cap	VO	213.06	A3-2	Positive	7-May-20	149.74	42.29%	246

LARGE CAP

Dow Industrial Diamonds	DIA	311.04	A3-3	Positive	22-May-20	244.89	27.01%	231
iShr Russell 1000 Index	IWB	216.42	A3-2	Positive	4-May-20	156.48	38.31%	249
iShr S & P 100	OEF	174.55	A3-3	Positive	9-Oct-20	160.35	8.86%	91
iShr S & P 500	IVV	382.64	A3-3	Positive	4-May-20	284.54	34.48%	249
NASDAQ 100	QQQ	319.03	A3-2	Positive	9-Oct-20	285.71	11.66%	91
Morningstar Large Core	JKD	219.92	A3-2	Positive	6-May-20	159.26	38.09%	247
NASDAQ Composite	ONEQ	512.16	A3-2	Positive	21-Apr-20	321.59	59.26%	262
SPDR S & P 500	SPY	381.26	A3-3	Positive	4-May-20	283.59	34.44%	249
PowerShares Dynamic Mkt	PWC	111.32	A3-2	Positive	9-Oct-20	97.45	14.23%	91
Rydex S&P Equal Weight	RSP	131.32	A2-2	Positive	20-May-20	96.65	35.87%	233
Russell Top Mega Cap	XLG	287.42	A3-3	Positive	9-Oct-20	268.79	6.93%	91
Vanguard Large Cap	VV	179.26	A3-2	Positive	4-May-20	130.77	37.08%	249

January 8, 2021

	Symbol	Today's Price	QPM Score	Trend	Trend Started	Starting Price	% Change Since Start	Days Open
BROAD MARKET								
iShr Dow Jones Total Market	IYY	96.40	A3-2	Positive	4-May-20	69.73	38.26%	249
iShr Russell 3000 Index	IWV	229.05	A3-2	Positive	13-May-20	162.51	40.95%	240
Vanguard Extended Mkt	VXF	171.97	A2-1	Positive	7-May-20	104.61	64.39%	246
Vanguard Total Market	VTI	199.25	A3-2	Positive	4-May-20	142.35	39.97%	249

Value

SMALL CAP

Russell 2000 Value	IWN	139.57	A1-1	Positive	8-Oct-20	108.48	28.66%	92
iShr S & P Small Cap 600 Barra Value	IJS	86.62	A1-1	Positive	20-Oct-20	66.40	30.45%	80
Morningstar Small Cap Value	JKL	147.83	A1-1	Positive	8-Oct-20	115.35	28.17%	92
Vanguard Small Cap	VBR	148.89	A2-1	Positive	8-Oct-20	119.62	24.47%	92

MID -CAP

iShr S & P Mid Cap 400 Barra Value	IJJ	89.97	A2-1	Positive	20-Oct-20	72.62	23.89%	80
iShr Russell Mid Cap Value	IWS	100.13	A2-2	Positive	1-Jun-20	77.11	29.85%	221
Morningstar Mid Cap Value	JKI	161.96	A2-2	Positive	8-Oct-20	139.34	16.23%	92

LARGE CAP

iShr Russell 1000 Value	IWD	140.77	A3-2	Positive	8-Oct-20	123.07	14.38%	92
iShr S & P 500 Value	IVE	131.22	A3-2	Positive	15-Oct-20	116.33	12.80%	85
Morningstar Large Cap Value	JKF	115.17	A3-2	Positive	5-Nov-20	100.63	14.45%	64
PwrShrs Large Cap	PWV	39.66	A3-2	Positive	4-Nov-20	34.54	14.82%	65
Vanguard Value	VTV	122.16	A3-2	Positive	7-Oct-20	106.99	14.18%	93

BROAD MARKET

iShr U.S.Core Value	IUSV	63.82	A2-2	Positive	15-Oct-20	56.20	13.56%	85
---------------------	------	-------	------	----------	-----------	-------	--------	----

January 8, 2021

	Symbol	Today's Price	QPM Score	Trend	Trend Started	Starting Price	% Change Since Start	Days Open
Growth								
SMALL CAP								
iShr Russell 2000 Growth	IWO	303.53	A1-1	Positive	6-May-20	180.55	68.11%	247
iShr S & P 600 Barra Growth	IJT	121.23	A1-1	Positive	20-Oct-20	94.00	28.97%	80
Morningstar Small Cap Growth	JKK	321.02	A2-1	Positive	25-Sep-20	230.78	39.10%	105
Vanguard Small Cap Growth	VBK	279.40	A2-1	Positive	4-May-20	170.81	63.57%	249
MID -CAP								
iShr S & P Mid Cap 400 Barra Growth	IJK	76.11	A2-2	Positive	20-Oct-20	63.37	20.10%	80
Russell Mid Cap Growth	IWP	105.86	A2-2	Positive	27-Apr-20	69.39	52.56%	256
LARGE CAP								
iShr Russell 1000 Growth	IWF	244.19	A3-2	Positive	27-Apr-20	170.21	43.46%	256
iShr S&P 500 Growth	IVW	64.75	A3-3	Positive	20-Oct-20	59.18	9.41%	80
Morningstar Large Cap Growth	JKE	294.77	A3-3	Positive	27-Apr-20	210.83	39.81%	256
Powershare Large Cap Growth	PWB	69.69	A3-2	Positive	4-May-20	48.35	44.13%	249
Vanguard Growth	VUG	256.99	A3-2	Positive	27-Apr-20	177.05	45.15%	256
BROAD MARKET								
iShr U.S. Core Growth	IUSG	90.16	A3-3	Positive	27-Apr-20	64.28	40.26%	256

January 8, 2021

	Symbol	Today's Price	QPM Score	Trend	Trend Started	Starting Price	% Change Since Start	Days Open
Sector / Industry								
BASIC MATERIALS								
iShr Dow Jones U.S. Basic Materials	IYM	121.16	A2-2	Positive	4-May-20	79.69	52.04%	249
SPDR Basic Industry	XLB	76.51	A2-2	Positive	4-May-20	50.97	50.11%	249
iShr Goldman Sachs Natural Resources	IGE	25.03	A2-2	Positive	19-Nov-20	22.25	12.49%	50
Comex Gold Trust	IAU	17.63	B2-3	Positive	31-Dec-20	18.13	-2.76%	8
iShr Silver Trust	SLV	23.51	B1-2	Positive	21-Dec-20	24.38	-3.57%	18
streetTracks Gold	GLD	173.34	B2-3	Positive	31-Dec-20	178.36	-2.81%	8
Vanguard Materials	VAW	166.33	A2-2	Positive	4-May-20	108.85	52.81%	249
CONSUMER CYCLICAL								
iShr U.S.Consumer Services	IYC	71.24	A3-2	Positive	4-May-20	49.44	44.09%	249
SPDR Consumer Discretionary	XLY	168.79	A3-3	Positive	27-Apr-20	114.35	47.61%	256
VanEck Vector Retail	RTH	161.46	B1-3	Positive	23-Apr-20	117.50	37.41%	260
SPDR S&P Retail	XRT	68.16	A1-1	Positive	6-May-20	36.31	87.72%	247
Invesco Dynamic Leisure&Entertainment	PEJ	41.57	A1-1	Positive	9-Nov-20	34.46	20.63%	60
Vanguard Consumer Discretionary	VCR	287.60	A2-2	Positive	27-Apr-20	173.22	66.03%	256
CONSUMER NON-CYCLICAL								
iShr U.S. Consumer Non Cyclical	IYK	181.06	A2-2	Positive	20-May-20	120.76	49.93%	233
SPDR Consumer Staples	XLP	66.90	B1-3	Positive	5-Jun-20	60.42	10.72%	217
Invesco DynamicFood & Bev	PBJ	36.45	B1-3	Positive	15-Oct-20	34.65	5.21%	85
Vanguard Consumer Staples	VDC	173.21	B1-3	Positive	5-Jun-20	154.42	12.17%	217
ENERGY								
iShr Dow Jones U.S. Energy	IYE	22.11	A1-1	Positive	19-Nov-20	19.18	15.28%	50
VanEck Vectors Oil Service	OIH	175.65	A1-1	Positive	13-Nov-20	119.19	47.37%	56
SPDR Energy	XLE	41.42	A1-1	Positive	19-Nov-20	36.00	15.06%	50
iShr Global Energy Sector	IXC	22.25	A1-1	Positive	16-Nov-20	19.59	13.58%	53
Invesco Dynamic Energy Explor & Prod	PXE	11.32	A1-1	Positive	19-Nov-20	9.33	21.33%	50
Invesco Dynamic Oil & Gas Service	PXJ	3.29	A1-1	Positive	16-Nov-20	2.52	30.56%	53
Invesco WilderHill Clean Energy	PBW	122.21	A1-1	Positive	7-May-20	31.71	285.40%	246
Vanguard Energy	VDE	57.03	A1-1	Positive	19-Nov-20	48.73	17.03%	50

January 6, 2021

	Symbol	Today's Price	QPM Score	Trend	Trend Started	Starting Price	% Change Since Start	Days Open
FINANCIAL								
iShr U.S. Financial Sector	IYF	68.52	A3-2	Positive	9-Oct-20	59.31	15.53%	91
iShr U.S. Financial Services	IYG	157.25	A2-2	Positive	22-Oct-20	127.59	23.25%	78
iShr U.S. Real Estate	IYR	83.48	B1-3	Positive	13-Nov-20	85.91	-2.83%	56
iShr Cohen & Steers REIT	ICF	52.29	B1-3	Positive	8-Jan-21	52.29	0.00%	0
SPDR Dow Jones REIT	RWR	84.52	A3-3	Positive	13-Nov-20	86.64	-2.45%	56
SPDR Financial Select Sector	XLF	30.92	A2-2	Positive	22-Oct-20	25.17	22.84%	78
iShr Global Financial	IXG	68.11	A2-2	Positive	29-Oct-20	52.44	29.88%	71
SPDR S&P Insurance	KIE	34.21	A3-2	Positive	20-Oct-20	29.38	16.44%	80
SPDR S&P Capital Mkt	KCE	78.15	A2-1	Positive	7-Oct-20	60.65	28.86%	93
SPDR S&P Banks	KBE	45.22	A1-1	Positive	20-Oct-20	32.76	38.03%	80
Vanguard Financial	VFH	76.36	A2-2	Positive	20-Oct-20	61.04	25.10%	80
Vangurard Real Estate	VNQ	83.07	B1-3	Positive	13-Nov-20	85.39	-2.72%	56
HEALTHCARE								
iShr U.S. Healthcare	IYH	254.16	A3-3	Positive	9-Oct-20	233.98	8.62%	91
iShr NASDAQ Biotech	IBB	158.23	A3-2	Positive	7-Oct-20	140.99	12.23%	93
VanEck BiotechMkt Vector	BBH	175.38	A3-2	Positive	27-Nov-20	165.02	6.28%	42
VanEck Pharmaceutical Mkt Vector	PPH	68.28	A3-3	Positive	13-Nov-20	65.33	4.51%	56
iShr Global Healthcare	IXJ	78.48	A3-3	Positive	4-Nov-20	73.74	6.43%	65
SPDR Healthcare	XLV	117.39	A3-3	Positive	15-Oct-20	106.86	9.85%	85
Invesco Dynamic Pharmaceutical	PJP	74.15	A3-2	Positive	13-Nov-20	67.14	10.44%	56
Invesco Dynamic Biotech & Genome	PBE	74.72	A2-1	Positive	9-Oct-20	62.31	19.92%	91
Vanguard Health Care	VHT	232.02	A3-2	Positive	5-Oct-20	206.35	12.44%	95
INDUSTRIAL								
iShr U.S. Industrials	IYJ	99.13	A3-2	Positive	22-May-20	69.39	42.86%	231
SPDR Industrial	XLI	89.61	A3-3	Positive	1-Jun-20	67.82	32.13%	221
Invesco Building & Construction	PKB	43.09	A2-2	Positive	20-May-20	26.96	59.83%	233
SPDR Homebuilders	XHB	58.65	A3-3	Positive	8-May-20	37.94	54.59%	245
Vanguard Industrials	VIS	174.05	A2-2	Positive	1-Jun-20	128.52	35.43%	221

January 8, 2021

	Symbol	Today's Price	QPM Score	Trend	Trend Started	Starting Price	% Change Since Start	Days Open
Sector / Industry								
TRANSPORTATION								
iShr Dow Jones Transportation	IYT	227.26	A3-3	Positive	1-Jun-20	159.24	42.72%	221
Invesco Aerospace & Defense	PPA	67.38	A2-2	Positive	4-Nov-20	57.37	17.45%	65
TECHNOLOGY								
iShr Dow Jones U.S. Technology	IYW	85.98	A3-2	Positive	24-Dec-20	85.18	0.94%	15
iShr ExpandedTechnology	IGM	352.96	A3-2	Positive	9-Oct-20	321.13	9.91%	91
iShrs Networking	IGN	62.12	A2-1	Positive	3-Nov-20	49.48	25.54%	66
VanEck Vectors Semiconductor	SMH	230.34	A1-1	Positive	27-Apr-20	133.54	72.49%	256
iShr Exponential Tech	XT	59.41	A2-2	Positive	27-Apr-20	39.85	49.08%	256
iShr Software	IGV	355.13	A3-2	Positive	27-Apr-20	236.23	50.33%	256
Invesco Dynamic Software	PSJ	159.62	A2-1	Positive	27-Apr-20	98.52	62.02%	256
SPDR Technology	XLK	130.76	A3-2	Positive	27-Apr-20	89.39	46.28%	256
iShr Global Technology Sector	IXN	305.14	A3-2	Positive	27-Apr-20	202.43	50.74%	256
Invesco Dynamic Networking	PXQ	86.45	A2-1	Positive	9-Oct-20	72.66	18.97%	91
Vanguard Info Tech	VGT	357.36	A3-2	Positive	27-Apr-20	236.55	51.07%	256
TELECOMMUNICATIONS								
iShr DJ U.S. Telecom	IYZ	31.11	A3-3	Positive	11-Nov-20	29.11	6.87%	58
iShr Global Telecom Sector	IXP	75.17	A3-3	Positive	15-Oct-20	68.05	10.46%	85
Invesco Media & Entertainment	PBS	47.30	A1-1	Positive	7-May-20	28.00	68.93%	246
Vanguard Communications	VOX	121.18	A3-2	Positive	15-Oct-20	104.78	15.65%	85
UTILITIES								
iShr Dow Jones U.S. Utility	IDU	77.28	D1-1	Negative	18-Dec-20	76.55	0.95%	21
Invesco Momentum Utilities	PUI	31.58	D2-1	Negative	4-Jan-21	31.04	1.74%	4
Invesco Water Resources	PHO	49.06	A3-2	Positive	22-May-20	34.56	41.96%	231
Vanguard Utilities	VPU	136.74	D1-1	Negative	21-Dec-20	133.35	2.54%	18
SPDR Utilities	XLU	62.33	D2-1	Negative	17-Dec-20	62.83	-0.80%	22

January 8, 2021

	Symbol	Today's Price	QPM Score	Trend	Trend Started	Starting Price	% Change Since Start	Days Open
International								
EUROPE								
iShr Europe	IEV	49.91	A2-2	Positive	9-Nov-20	44.44	12.31%	60
Invesco Euro Currency Trust	FXE	114.80	A3-3	Positive	5-Nov-20	111.21	3.23%	64
SPDR Euro Stock 50	FEZ	43.20	A2-2	Positive	13-Nov-20	39.64	8.98%	56
Vanguard FTSE European	VGK	62.78	A2-2	Positive	9-Nov-20	55.55	13.02%	60
iShr MSCI Austria	EWO	21.22	A1-1	Positive	6-Nov-20	15.23	39.33%	63
iShr MSCI Belgium	EWK	20.32	A2-2	Positive	13-Nov-20	18.63	9.07%	56
iShr MSCI Eurozone	EZU	45.80	A2-2	Positive	6-Nov-20	39.29	16.57%	63
iShr MSCI France	EWQ	34.47	A2-2	Positive	6-Nov-20	29.21	18.01%	63
iShr MSCI Germany	EWG	32.92	A3-2	Positive	25-Nov-20	30.58	7.65%	44
iShr MSCI Italy	EWI	30.38	A2-2	Positive	9-Nov-20	26.55	14.43%	60
iShr MSCI Netherlands	EWN	42.98	A2-2	Positive	7-May-20	28.33	51.71%	246
iShr MSCI Spain	EWP	28.53	A1-2	Positive	9-Nov-20	24.43	16.78%	60
iShr MSCI Sweden	EWD	41.93	A2-2	Positive	20-May-20	28.37	47.80%	233
iShr MSCI Switzerland	EWL	45.46	A3-3	Positive	16-Nov-20	43.07	5.55%	53
iShr MSCI UK	EWU	31.26	A2-2	Positive	10-Nov-20	28.13	11.13%	59

International								
ASIA								
FTSE/Xinhua China 25	FXI	48.32	B1-3	Positive	16-Oct-20	44.11	9.54%	84
MSCI Pacific ex-Japan	EPP	49.77	A2-2	Positive	22-Oct-20	42.02	18.44%	78
iShr MSCI Australia	EWA	24.83	A2-2	Positive	15-Oct-20	20.75	19.66%	85
iShr MSCI Hong Kong	EWH	25.55	A3-3	Positive	4-Nov-20	22.78	12.16%	65
iShr MSCI Japan	EWJ	69.29	A3-2	Positive	7-May-20	51.46	34.65%	246
iShr MSCI Malaysia	EWM	28.88	A3-2	Positive	10-Nov-20	27.52	4.94%	59
iShr MSCI Singapore	EWS	22.74	A2-2	Positive	15-Oct-20	19.14	18.81%	85
iShr MSCI South Korea	EWY	96.22	A1-1	Positive	13-May-20	50.47	90.65%	240
iShr MSCI Taiwan	EWT	56.27	A2-2	Positive	4-May-20	36.69	53.37%	249
PowerShares Golden Dragon China	PGJ	68.86	A2-1	Positive	4-May-20	38.20	80.26%	249
Vanguard FTSE Pacific	VPL	82.71	A2-2	Positive	20-May-20	60.59	36.51%	233

	Symbol	Today's Price	QPM Score	Trend	Trend Started	Starting Price	% Change Since Start	Days Open
AMERICAS								
iShr S&P Latin America 40	ILF	30.61	A1-1	Positive	5-Nov-20	23.08	32.63%	64
iShr MSCI Brazil	EWZ	37.70	A1-1	Positive	6-Nov-20	30.76	22.56%	63
iShr MSCI Canada	EWC	32.11	A3-2	Positive	4-Nov-20	27.55	16.55%	65
iShrMSCI Mexico	EWW	45.09	A2-1	Positive	8-Oct-20	35.35	27.55%	92
AFRICA								
iShars MSCI South Africa	EZA	44.37	A3-2	Positive	22-Oct-20	39.31	12.87%	78
GLOBAL								
iShr MSCI EAFE	EFA	75.73	A2-2	Positive	5-Nov-20	66.07	14.62%	64
iShr MSCI EAFE Growth	EFG	103.52	A3-2	Positive	7-May-20	75.84	36.50%	246
iShr MSCI EAFE Value	EFV	49.47	A2-2	Positive	9-Nov-20	43.64	13.36%	60
iShrGlobal 100	IOO	64.11	A3-2	Positive	15-Oct-20	57.86	10.80%	85
SPDR Global Dow	DGT	100.06	A2-2	Positive	29-Oct-20	80.47	24.34%	71
iShr MSCI Emerging Markets	EEM	54.71	A2-2	Positive	1-Jun-20	38.60	41.74%	221
Invesco Builder Emerging Markets	ADRE	59.50	A2-2	Positive	1-Jun-20	37.36	59.26%	221
Invesco International Dividend Achiever	PID	16.16	A2-2	Positive	22-Oct-20	13.42	20.46%	78
Vanguard FTSE Emerging Markets	VWO	52.46	A3-2	Positive	1-Jun-20	38.21	37.29%	221

	Symbol	Today's Price	QPM Score	Trend	Trend Started	Starting Price	% Change Since Start	Days Open
Income								
TREASURY BONDS								
iShr 1 -3 Yr Tsy	SHY	86.35	D1-1	Negative	21-Aug-20	86.51	-0.18%	140
iShr 7-10 yr Tsy	IEF	118.24	D1-1	Negative	5-Oct-20	120.92	-2.22%	95
iShr 20+ yr Tsy	TLT	151.32	D1-1	Negative	27-Aug-20	161.24	-6.15%	134
iShr TIPS	TIP	126.79	B1-3	Positive	4-Dec-20	126.17	0.49%	35
CORPORATE BONDS								
iShr iBoxx Invest Grd Corp Bond	LQD	135.76	A3-3	Positive	17-Nov-20	136.64	-0.64%	52
INVESTMENT GRADE BONDS								
iShr CoreU.S. Aggregate Bond	AGG	117.08	D1-1	Negative	4-Jan-21	118.04	-0.81%	4
Dividend ETF								
iShr DJ Select Dividend	DVY	99.44	A3-2	Positive	15-Oct-20	86.39	15.11%	85
PSDividend Achievers High Yield	PEY	18.00	A2-2	Positive	15-Oct-20	15.29	17.72%	85
Averages								
Dow Jones Average	DJIA	31097.97	A2-3	Positive	22-May-20	24465.16	27.11%	231
NASDAQ OTC Composite	NASDAQ	13201.98	A2-2	Positive	27-Apr-20	8730.16	51.22%	256
Standard & Poor's 500 Composite	SP500	3824.68	A3-3	Positive	4-May-20	2842.74	34.54%	249