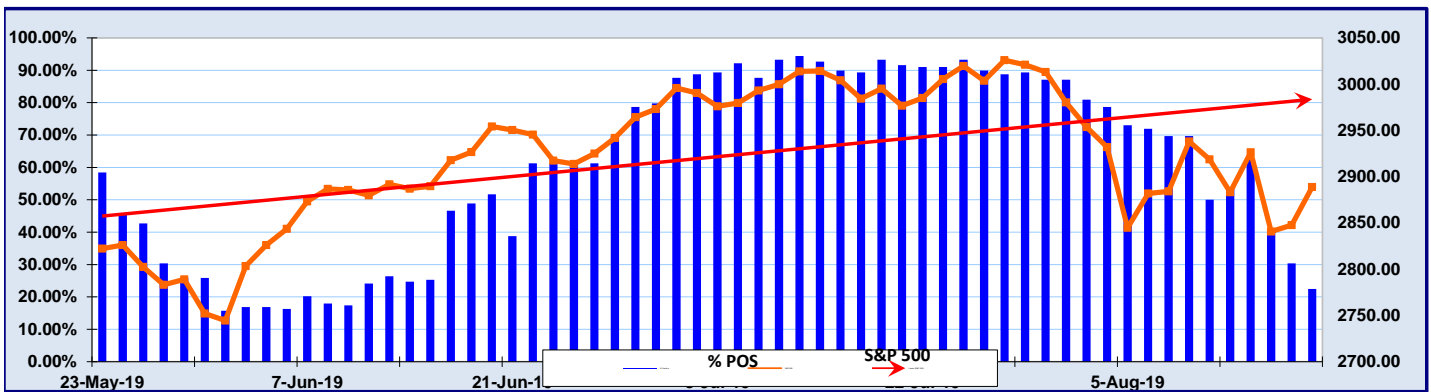


The Quacera ETF Trend Report

August 16, 2019

% Positive Momentum 22.47%



Quacera Positive Momentum Box Scores

U.S. Sectors and Industries

Basic Materials , Industrial, and Transport	35.71%
Consumer Related	30.00%
Energy	12.50%
Finance	25.00%
Healthcare	0.00%
Technology	63.64%
Telecommunication	0.00%
Utilities	100.00%
SPDR Sectors	33.33%

Investment Styles

Small - Cap	0.00%
Mid - Cap	10.00%
Large - Cap	18.18%
Growth	45.45%
Value	0.00%
Income	75.00%

International

Americas	0.00%
Asia	0.00%
Europe	11.76%
Global Composites	0.00%

QPM Score Explanation

Q - Refers to the Quadrant:

- A - Positive Momentum & Outperforming
- B - Positive Momentum & Underperforming
- C - Negative Momentum & Outperforming
- D - Negative Momentum & Underperforming

QP The first number relates to performance within the quadrant. "1" is the best performance in the quadrant, so it is always at the top of the quadrant. In "A" the "1" is the best performance. In "B" the "1" is the least negative performance.

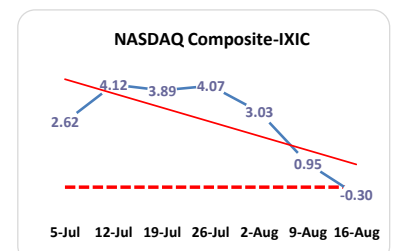
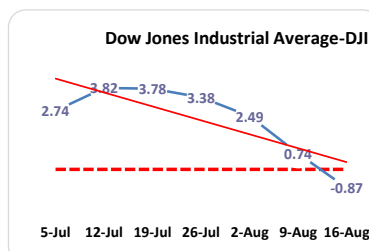
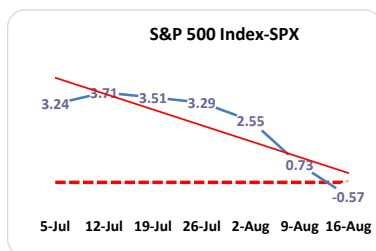
QPM The second number refers to momentum within the quadrant. "1" is the best momentum in the quadrant, so it is always on the right side of the quadrant. In "A" the "1" is the best positive momentum. In "C" the "1" is the least negative momentum for the quadrant.

QPM Score " A3-1 " This reflects the position in Quadrant "A" In that quadrant the ETF is in the region of least positive performance "3" and the best positive momentum "1".

In this presentation the Standard and Poor's 500 Composite is the benchmark for performance comparisons.

Momentum is based on prices from the previous thirty weeks. The data is weighted to give more recent prices emphasis.

Early Warning Momentum Tracking : The Averages



August 16, 2019

	Symbol	Today's Price	QPM Score	Trend	Trend Started	Starting Price	% Change Since Start
Market Capitalization							
MICRO CAP							
iShare Russell Micro Cap	IWC	86.84	D1-1	Negative	2-Aug-19	89.72	-3.21%
First Trust DJ Micro Cap	FDM	43.76	C3-1	Negative	14-Aug-19	43.22	1.24%
PowerShares Micro Cap	PZI	18.44	B1-3	Positive	1-Feb-19	17.72	4.04%
SMALL CAP							
iShr Russell 2000 Index	IWM	148.63	D1-1	Negative	7-Aug-19	149.42	-0.53%
iShare S & P Small Cap 600 Index	IJR	75.64	D1-1	Negative	14-Aug-19	74.27	1.84%
Morningstar Small Core	JKJ	168.43	D1-1	Negative	14-Aug-19	165.62	1.70%
Vanguard Small Cap	VB	151.39	D1-1	Negative	14-Aug-19	148.62	1.86%
MID -CAP							
iShare S & P Mid Cap 400	IJH	187.37	D1-1	Negative	14-Aug-19	183.78	1.95%
SPDR Mid Cap S & P 400	MDY	341.68	D1-1	Negative	14-Aug-19	335.00	1.99%
iShare Russell Mid Cap	IWR	54.58	D1-1	Negative	15-Aug-19	53.66	1.71%
Morningstar Mid Core	JKG	190.70	C3-1	Negative	15-Aug-19	187.89	1.50%
Vanguard Mid Cap	VO	163.13	D1-1	Negative	15-Aug-19	160.71	1.51%
LARGE CAP							
Dow Industrial Diamonds	DIA	258.88	D1-1	Negative	14-Aug-19	255.08	1.49%
iShare Russell 1000 Index	IWB	160.42	C3-1	Negative	15-Aug-19	158.10	1.47%
iShare S & P 100	OEF	127.92	C3-1	Negative	15-Aug-19	125.98	1.54%
iShare S & P 500	IVV	290.58	C3-1	Negative	15-Aug-19	286.34	1.48%
NASDAQ 100	QQQ	185.48	C3-1	Negative	16-Aug-19	185.48	0.00%
Morningstar Large Core	JKD	162.76	C3-1	Negative	14-Aug-19	160.21	1.59%
NASDAQ Composite	ONEQ	310.35	C3-1	Negative	16-Aug-19	310.35	0.00%
SPDR S & P 500	SPY	288.85	C3-1	Negative	15-Aug-19	284.65	1.48%
PowerShares Dynamic Mkt	PWC	93.53	D1-1	Negative	9-Aug-19	94.82	-1.36%
Rydex S&P Equal Weight	RSP	104.09	D1-1	Negative	14-Aug-19	102.40	1.65%
Russell Top Mega Cap	XLG	207.32	C3-1	Negative	15-Aug-19	204.52	1.37%
Vanguard Large Cap	VV	132.76	C3-1	Negative	15-Aug-19	130.76	1.53%
BROAD MARKET							
iShare Dow Jones Total Market	IYY	143.73	C3-1	Negative	15-Aug-19	141.65	0.00%
iShare Russell 3000 Index	IWV	169.46	C3-1	Negative	15-Aug-19	166.95	0.00%
Vanguard Extended Mkt	VXF	114.95	D1-1	Negative	14-Aug-19	113.01	1.56%
Vanguard Total Market	VTI	147.34	C3-1	Negative	15-Aug-19	145.14	0.00%

August 16, 2019

	Symbol	Today's Price	QPM Score	Trend	Trend Started	Starting Price	% Change Since Start
Value							
SMALL CAP							
Russell 2000 Value	IWN	113.82	D1-1	Negative	2-Aug-19	117.31	-2.98%
iShare S & P Small Cap 600 Barra Value	IJS	142.40	D1-1	Negative	7-Aug-19	143.26	-0.60%
Morningstar Small Cap Value	JKL	127.24	D1-1	Negative	1-Aug-19	133.85	-4.93%
Vanguard Small Cap	VBR	123.63	D1-1	Negative	5-Aug-19	123.95	-0.26%
MID -CAP							
iShare S & P Mid Cap 400 Barra Value	IJJ	151.95	D1-1	Negative	9-Aug-19	154.75	-1.81%
iShare Russell Mid Cap Value	IWS	85.89	D1-1	Negative	14-Aug-19	84.39	1.78%
Morningstar Mid Cap Value	JKI	152.15	D1-1	Negative	14-Aug-19	149.67	1.66%
LARGE CAP							
iShare Russell 1000 Value	IWD	123.40	D1-1	Negative	14-Aug-19	121.28	1.75%
iShr S & P 500 Value	IVE	114.04	C3-1	Negative	15-Aug-19	112.09	1.74%
Morningstar Large Cap Value	JKF	105.36	D1-1	Negative	14-Aug-19	103.74	1.56%
PwrShrs Large Cap	PWV	36.30	C3-1	Negative	16-Aug-19	36.30	0.00%
Vanguard Value	VTV	107.57	D1-1	Negative	14-Aug-19	105.95	1.53%
BROAD MARKET							
iShare U.S.Core Value	IUSV	55.30	C3-1	Negative	14-Aug-19	54.32	1.80%

	Symbol	Today's Price	QPM Score	Trend	Trend Started	Starting Price	% Change Since Start
Growth							
SMALL CAP							
iShr Russell 2000 Growth	IWO	194.86	C3-1	Negative	14-Aug-19	191.76	1.62%
iShare S & P 600 Barra Growth	IJT	177.89	C3-1	Negative	14-Aug-19	174.50	1.94%
Morningstar Small Cap Growth	JKK	200.71	C3-1	Negative	16-Aug-19	200.71	0.00%
Vanguard Small Cap Growth	VBK	183.78	C3-1	Negative	16-Aug-19	183.78	0.00%
MID -CAP							
iShare S & P Mid Cap 400 Barra Growth	IJK	221.31	C3-1	Negative	15-Aug-19	216.98	2.00%
Russell Mid Cap Growth	IWP	141.66	A3-3	Positive	12-Jun-19	140.50	0.83%
LARGE CAP							
iShare Russell 1000 Growth	IWF	157.84	A3-3	Positive	18-Jun-19	157.24	0.38%
iShr S&P 500 Growth	IVW	177.63	C3-1	Negative	16-Aug-19	177.63	0.00%
Morningstar Large Cap Growth	JKE	191.15	A3-3	Positive	12-Jun-19	187.28	2.07%
Powershare Large Cap Growth	PWB	48.33	A3-3	Positive	18-Jun-19	48.36	-0.05%
Vanguard Growth	VUG	163.60	A3-3	Positive	18-Jun-19	163.15	0.28%
BROAD MARKET							
iShare U.S. Core Growth	IUSG	62.13	C3-1	Negative	16-Aug-19	62.13	0.00%

August 16, 2019

	Symbol	Today's Price	QPM Score	Trend	Trend Started	Starting Price	% Change Since Start
Sector / Industry							
BASIC MATERIALS							
iShare Dow Jones U.S. Basic Materials	IYM	89.09	D1-1	Negative	14-Aug-19	87.73	1.55%
SPDR Basic Industry	XLB	56.62	C3-1	Negative	16-Aug-19	56.62	0.00%
iShare Goldman Sachs Natural Resources	IGE	27.99	D1-1	Negative	1-Aug-19	29.48	-5.05%
Comex Gold Trust	IAU	14.49	A2-2	Positive	31-May-19	12.51	15.83%
iShare Silver Trust	SLV	16.02	A2-2	Positive	24-Jun-19	14.46	10.79%
streetTracks Gold	GLD	142.78	A2-2	Positive	31-May-19	123.33	15.77%
Vanguard Materials	VAW	122.29	D1-1	Negative	14-Aug-19	120.22	1.72%
CONSUMER CYCLICAL							
iShare Dow Jones U.S. Consumer Cyclical	IYC	212.92	C3-1	Negative	15-Aug-19	210.21	1.29%
SPDR Consumer Discretionary	XLY	115.89	C3-1	Negative	15-Aug-19	114.59	1.13%
Retail Mkt Vectors	RTH	107.65	C3-1	Negative	15-Aug-19	106.04	1.52%
PowerShares Consumer Retail	PMR	36.17	D1-1	Negative	14-Aug-19	35.61	1.56%
PowerShares Leisure & Entertainment	PEJ	43.05	C3-1	Negative	16-Aug-19	43.05	0.00%
Vanguard Consumer Discretionary	VCR	173.64	C3-1	Negative	14-Aug-19	171.98	0.97%
CONSUMER NON-CYCLICAL							
iShare Dow Jones U.S. Consumer Non Cyclical	IYK	122.47	A3-3	Positive	12-Jun-19	121.86	0.50%
SPDR Consumer Staples	XLP	60.21	A3-3	Positive	12-Feb-19	54.35	10.78%
PS Dynamic Food & Bev	PBJ	34.97	A3-3	Positive	5-Feb-19	31.72	10.25%
Vanguard Consumer Staples	VDC	153.68	A3-3	Positive	8-Feb-19	139.28	10.34%
ENERGY							
iShare Dow Jones U.S. Energy	IYE	30.57	D2-2	Negative	26-Jul-19	33.52	-8.80%
Oil ServiceMkt Vector	OIH	11.33	D3-3	Negative	7-May-19	15.90	-28.74%
SPDR Energy	XLE	57.02	D1-2	Negative	1-Aug-19	61.28	-6.95%
iShare Global Energy Sector	IXC	28.81	D2-2	Negative	13-May-19	32.33	-10.89%
PowerShares Energy Exploration	PXE	14.16	D2-3	Negative	13-May-19	18.27	-22.50%
PowerShares Oil & Gas Services	PXJ	4.64	D3-3	Negative	7-May-19	6.65	-30.30%
PowerShares WilderHill Clean Energy	PBW	29.40	A3-3	Positive	13-Jun-19	28.86	1.87%
Vanguard Energy	VDE	75.06	D2-2	Negative	23-Jul-19	83.93	-10.57%
FINANCIAL							
iShare Dow Jones U.S. Financial Sector	IYF	124.01	C3-1	Negative	16-Aug-19	124.01	0.00%
iShare Dow Jones U.S. Financial Services	IYG	130.47	D1-1	Negative	16-Aug-19	130.47	0.00%
iShare Dow Jones U.S. Real Estate	IYR	91.50	A3-3	Positive	29-Jan-19	82.02	11.56%
iShare Cohen & Steers Realty Majors	ICF	117.71	A3-3	Positive	30-Jan-19	104.85	12.27%
DJ Wilshire REIT	RWR	101.94	A3-3	Positive	29-Jul-19	100.56	1.37%
SPDR Financial	XLF	26.57	D1-1	Negative	14-Aug-19	25.98	2.27%
iShare Global Financial	IXG	60.15	D1-1	Negative	5-Aug-19	60.69	-0.89%
KBW Insurance	KIE	33.89	C3-1	Negative	16-Aug-19	33.89	0.00%
KBW Capital Market	KCE	51.79	D1-1	Negative	8-Aug-19	54.31	-4.64%
KBW Banks	KBE	40.73	D1-1	Negative	9-Aug-19	41.82	-2.61%
Vanguard Financial	VFH	66.64	D1-1	Negative	14-Aug-19	65.26	2.11%
Vanguard REIT	VNQ	91.18	A3-3	Positive	30-Jan-19	82.58	10.41%
HEALTHCARE							
iShare Dow Jones U.S. Healthcare	IYH	191.05	D1-1	Negative	14-Aug-19	188.09	1.57%
NASDAQ Biotech	IBB	104.97	C3-1	Negative	2-Aug-19	105.07	-0.10%
BiotechMkt Vector	BBH	125.52	C3-1	Negative	14-Aug-19	123.22	1.87%
Pharmaceutical Mkt Vector	PPH	56.19	D1-1	Negative	25-Jul-19	56.93	-1.30%
iShare Global Healthcare	IXJ	60.79	C3-1	Negative	14-Aug-19	59.92	1.45%
SPDR Healthcare	XLV	90.55	D1-1	Negative	9-Aug-19	91.40	-0.93%
PowerShares Pharmaceutical	PJP	56.29	D1-1	Negative	25-Mar-19	64.02	-12.07%
PowerShares Biotech & Genome	PBE	51.48	C3-1	Negative	14-Aug-19	50.43	2.07%
Vanguard Health Care	VHT	169.94	D1-1	Negative	14-Aug-19	167.31	1.57%
INDUSTRIAL							
iShr U.S. Industrials	IYJ	153.58	C3-1	Negative	14-Aug-19	150.35	2.15%
SPDR Industrial	XLI	74.30	D1-1	Negative	14-Aug-19	72.97	1.82%
PowerShares Building & Construction	PKB	30.76	A3-3	Positive	31-Jan-19	26.19	17.45%
SPDR Homebuilders	XHB	40.61	C3-1	Negative	15-Aug-19	40.05	1.40%
Vanguard Industrials	VIS	139.92	D1-1	Negative	14-Aug-19	16-May-00	1.83%

August 16, 2019

	Symbol	Today's Price	QPM Score	Trend	Trend Started	Starting Price	% Change Since Start
Sector / Industry							
TRANSPORTATION							
iShare Dow Jones Transportation	IYT	179.59	D1-1	Negative	14-Aug-19	177.14	1.38%
PowerShares Aerospace & Defense	PPA	65.93	A3-3	Positive	31-Jan-19	55.50	18.79%
TECHNOLOGY							
iShare Dow Jones U.S. Technology	IYW	198.24	A3-3	Positive	24-Jun-19	199.03	-0.40%
iShare Goldman Sach Technology	IGM	214.33	A3-3	Positive	24-Jun-19	216.72	-1.10%
iShrs Networking	IGN	50.78	D1-1	Negative	9-Aug-19	52.73	-3.70%
Market Vectors Semiconductor	SMH	112.23	A3-3	Positive	1-Jul-19	113.33	-0.97%
iShr Exponential Tech	XT	20.18	D3-3	Negative	14-Aug-19	36.95	-45.39%
iShare Goldman Sachs Software	IGV	212.72	C3-1	Negative	15-Aug-19	209.77	1.41%
PowerShares Software	PSJ	97.17	A3-3	Positive	24-Jan-19	80.44	20.80%
SPDR Technology	XLK	78.28	A3-3	Positive	18-Jun-19	77.54	0.95%
iShare Global Technology Sector	IXN	177.73	A3-3	Positive	24-Jun-19	179.43	-0.95%
PowerShares Networking	PXQ	55.55	D1-1	Negative	9-Aug-19	56.96	-2.47%
Vanguard Info Tech	VGT	210.53	A3-3	Positive	18-Jun-19	209.25	0.61%
TELECOMMUNICATIONS							
iShr DJ U.S. Telecom	IYZ	28.01	D1-1	Negative	8-Aug-19	29.08	-3.68%
iShare Global Telecom Sector	IXP	56.45	D1-1	Negative	14-Aug-19	55.73	1.29%
PowerShares Media & Entertainment	PBS	31.89	D1-1	Negative	9-Aug-19	32.82	-2.83%
Vanguard Telecom	VOX	86.10	C3-1	Negative	16-Aug-19	86.10	0.00%
UTILITIES							
iShare Dow Jones U.S. Utility	IDU	154.67	A3-3	Positive	6-Feb-19	138.63	11.57%
PowerShares Utilities	PUI	33.66	B1-3	Positive	31-Jan-19	30.60	10.00%
PowerShares Water Resources	PHO	35.94	A3-3	Positive	5-Jun-19	34.57	3.96%
Vanguard Utilities	VPU	136.49	A3-3	Positive	6-Feb-19	121.84	12.02%
Utilities SPDR	XLU	61.38	A3-3	Positive	6-Feb-19	54.72	12.17%

International							
EUROPE							
iShr SP 350 Europe (IEV)	IEV	41.37	D1-1	Negative	30-Jul-19	43.19	-4.21%
Europe 100 ADR	ADRU	19.80	D1-1	Negative	1-Aug-19	20.74	-4.53%
PowerShares Euro Currency Trust	FXE	105.47	D1-1	Negative	25-Jul-19	106.04	-0.54%
DJ Stoxx 50	FEU	32.26	D1-1	Negative	1-Aug-19	33.19	-2.80%
DJ Euro Stock 60	FEZ	35.88	D1-1	Negative	5-Aug-19	35.86	0.06%
Vanguard European	VGK	51.55	D1-1	Negative	1-Aug-19	53.26	-3.21%
MSCI Austria	EWO	18.67	D1-1	Negative	22-May-19	20.12	-7.23%
MSCI Belgium	EWK	18.24	B1-3	Positive	9-Jul-19	18.36	-0.65%
MSCI EMU Index	EZU	37.03	D1-1	Negative	1-Aug-19	38.38	-3.52%
MSCI France	EWQ	28.73	D1-1	Negative	2-Aug-19	29.18	-1.54%
MSCI Germany	EWG	25.60	D1-1	Negative	30-Jul-19	26.98	-5.11%
MSCI Italy	EWI	25.66	D1-1	Negative	8-Aug-19	26.32	-2.51%
MSCI Netherlands	EWN	29.90	D1-1	Negative	14-Aug-19	29.47	1.46%
MSCI Spain	EWP	26.61	D1-1	Negative	25-Jul-19	28.61	-6.99%
MSCI Sweden	EWD	27.71	D1-2	Negative	25-Jul-19	30.08	-7.88%
MSCI Switzerland	EWL	36.96	A3-3	Positive	28-Jan-19	33.03	11.90%
MSCI United Kingdom	EWU	29.80	D1-2	Negative	20-May-19	32.53	-8.39%

		August 16, 2019		Symbol	Today's Price	QPM Score	Trend	Trend Started	Starting Price	% Change Since Start
International										
ASIA										
	FTSE/Xinhua China 25	FXI	38.60	D1-2	Negative		1-Aug-19	40.17	-3.91%	
	MSCI Pacific ex-Japan	EPP	43.77	D1-1	Negative		5-Aug-19	43.84	-0.16%	
	MSCI Australia	EWA	21.23	D1-1	Negative		9-Aug-19	21.49	-1.21%	
	MSCI Hong Kong	EWH	23.25	D1-2	Negative		1-Aug-19	24.20	-3.93%	
	MSCI Japan	EWJ	53.41	D1-1	Negative		5-Aug-19	52.72	1.31%	
	MSCI Malaysia	EWM	27.95	D1-1	Negative		31-Jul-19	28.89	-3.25%	
	MSCI Singapore	EWS	22.91	D1-1	Negative		6-Aug-19	23.22	-1.34%	
	MSCI South Korea	EWY	52.20	D2-2	Negative		19-Jul-19	57.72	-9.56%	
	MSCI Taiwan	EWT	34.23	C3-1	Negative		14-Aug-19	33.48	2.24%	
	Asia 50 ADR	ADRA	29.83	D1-1	Negative		6-Aug-19	29.31	1.77%	
	PowerShares Golden Dragon China	PGJ	35.56	D1-2	Negative		30-Jul-19	36.58	-2.79%	
	Vanguard Pacific	VPL	62.81	D1-1	Negative		5-Aug-19	62.25	0.90%	
AMERICAS										
	iShare S&P Latin America 40	ILF	30.58	D1-1	Negative		5-Aug-19	30.95	-1.20%	
	MSCI Brazil	EWZ	41.65	D1-1	Negative		16-Aug-19	41.65	0.00%	
	MSCI Canada	EWC	27.72	D1-1	Negative		9-Aug-19	28.17	-1.60%	
	MSCI Mexico	EWX	39.12	D2-2	Negative		21-May-19	44.58	-12.25%	
AFRICA										
	iShars MSCI South Africa	EZA	46.52	D2-2	Negative		30-Jul-19	53.10	-12.39%	
GLOBAL										
	MSCI EAFE	EFA	62.25	D1-1	Negative		1-Aug-19	64.27	-3.14%	
	MSCI EAFE Growth	EFG	78.01	D1-1	Negative		9-Aug-19	78.81	-1.02%	
	MSCI EAFE Value	EFV	44.53	D1-1	Negative		17-May-19	48.21	-7.63%	
	iShare S & P Global 100	IOO	47.49	D1-1	Negative		9-Aug-19	47.83	-0.71%	
	SPDR Dow Jones Global Titans	DGT	80.95	D1-1	Negative		6-Aug-19	81.68	-0.89%	
	iShr MSCI Emerging Markets	EEM	39.54	D1-1	Negative		1-Aug-19	40.95	-3.44%	
	Emerging Mkt 50	ADRE	37.80	D1-1	Negative		5-Aug-19	36.55	3.42%	
	Developed Market 100 ADR (ADRD)	ADRD	20.38	D1-1	Negative		31-Jul-19	21.21	-3.91%	
	PowerShares Dividend Achiever Int'lID	PID	15.39	D1-1	Negative		26-Jul-19	16.21	-5.06%	
	Vanguard Emerging Markets	VVO	39.74	D1-1	Negative		5-Aug-19	39.18	1.43%	

Income										
TREASURY BONDS										
	iShr 1 -3 Yr Tsy	SHY	85.09	A3-3	Positive		26-Nov-18	83.16	2.32%	
	iShare 7-10 yr Tsy	IEF	113.61	A3-3	Positive		30-Nov-18	101.78	11.62%	
	iShare 20+ yr Tsy	TLT	146.13	A2-2	Positive		10-Dec-18	118.90	22.90%	
	iShare TIPS	TIP	117.22	A3-3	Positive		3-Jan-19	110.32	6.25%	
CORPORATE BONDS										
	iShr iBoxx Invest Grd Corp Bond	LQD	127.85	A3-3	Positive		4-Jan-19	113.16	12.98%	
INVESTMENT GRADE BONDS										
	iShr Core Aggregate	AGG	113.67	A3-3	Positive		11-Dec-18	105.58	7.66%	
Dividend ETF										
	iShare DJ Select Dividend	DVY	96.69	D1-1	Negative		14-Aug-19	95.10	1.67%	
	PowerShares Dividend Achievers High Yield	PEY	17.58	D1-1	Negative		9-Aug-19	17.68	-0.57%	

Averages										
	Dow Jones Average	DJIA	25886.01	C3-1	Negative		14-Aug-19	25479.42	1.60%	
	NASDAQ OTC Composite	NASDAQ	7895.99	C3-1	Negative		16-Aug-19	7895.99	0.00%	
	Standard & Poor's 500 Composite	SP500	2888.68	D1-1	Negative		15-Aug-19	2847.60	1.44%	